



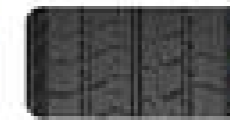
**WINTER
WD2**

NON STUDED
SNOW COMMERCIAL TIRE



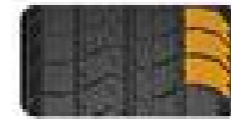
THREE WIDE LONGITUDINAL GROOVES

Three wide longitudinal grooves can highly evacuate water to enhance steering, braking and hydroplaning resistance.



LARGE QUANTITY OF SILICA IN TREAD

Large quantity of silica in tread is formulated to maintain its grip, braking and traction under extreme cold-winter conditions including snow and ice.



STIFF SHOULDER BLOCKS DESIGN

Guarantees cornering stability, improve driving comfort.



RUBBER FOAM TECHNOLOGY

Tread formula applies the technology of rubber foam. These tiny bubbles in the rubber allow the tread to decrease hardness in low temperature manner. Result: increase the ground contact area and significantly improve the grip.

Series	Size	Uj	Sl	PR	Approved Rim	Tread Depth 1/32" MM	Overall Diameter inch mm	Section Width inch mm	Max Load lbs ^S kg	Max Load lbs ^D kg	Max Pressure psi kPa	Revs. Per Mile
70	195/70R15C	104/102	S	8PR/LRD	5.0-5.5-6.0	12.5 9.9	25.8 655	7.9 201	1984 900	1874 850	65 450	805
	205/70R15C	106/104	S	8PR/LRD	5.5-6.0-6.5	12.5 9.9	26.3 669	8.2 209	2094 950	1984 900	65 450	789
	215/70R15C	109/107	S	8PR/LRD	5.5-6.5-7.0	12.5 9.9	26.9 683	8.7 221	2271 1030	2149 975	65 450	772
	225/70R15C	112/110	S	8PR/LRD	6.0-6.5-7.0	13.0 10.3	27.4 697	9.0 228	2469 1120	2337 1060	65 450	757
65	195/65R16C	104/102	T	8PR/LRD	5.5-6.0	12.5 9.9	26.0 660	7.9 201	1984 900	1874 850	69 475	799
	205/65R16C	107/105	T	8PR/LRD	5.5-6.0-6.5	12.5 9.9	26.5 674	8.2 209	2149 975	2039 925	69 475	783
	215/65R16C	109/107	T	8PR/LRD	6.0-6.5-7.0	12.5 9.9	27.0 688	8.7 221	2271 1030	2149 975	69 475	769
	225/65R16C	112/110	T	8PR/LRD	6.0-6.5-7.0	13.0 10.3	27.5 699	9.0 228	2469 1120	2337 1060	69 475	756
	235/65R16C	115/113	S	8PR/LRD	6.5-7.0-7.5	13.0 10.3	28.0 712	9.4 240	2679 1215	2535 1150	69 475	741

Bold designates measuring rim width. These data can be changed by manufacturer without prior notice.