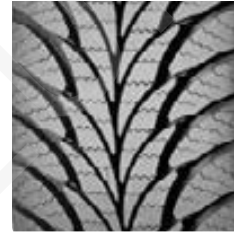


EAGLE® ULTRA GRIP® GW-3 EAGLE® ULTRA GRIP® GW-2

(Select sizes with R0F)

A Winter Performance Tire That Offers Responsive Handling and Traction in Wet and Slippery Conditions; Trusted for Use on Many Police Vehicles

- 1. Unique high-performance winter tread compound
- 2. High-blade density with multiple biting edges
- 3. V-TRED™ Technology



EAGLE ULTRA GRIP GW-2
TREAD PATTERN

FEATURES

- 1. Unique high-performance winter tread compound
- 2. High-blade density with multiple biting edges
- 3. V-TRED Technology

BENEFITS

- Offers performance driving in all winter conditions
- Enhances grip in snow and ice with wet and dry steering capability
- Helps evacuate water and slush away from the contact patch

POST-PURCHASE PROGRAMS:

- Nationwide Warranty Service
- Online Tire Registration



Severe Snow



Ice Traction



Ultra Wet Traction



Cornering Stability



Steering Responsiveness