

hankook
driving emotion



ventus Prime³

The perfect balance between performance and safety



Contents

Features and performance information

Key performance

Design features and technology

Available sizes



ventus Prime³

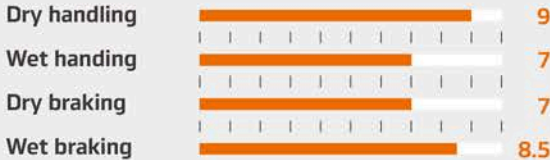


Technology icon

- Alignment indicator
- Chamfer sipe
- Noise prediction

Performance icon

- Dry handling
- Wet handling
- Dry braking
- Wet braking



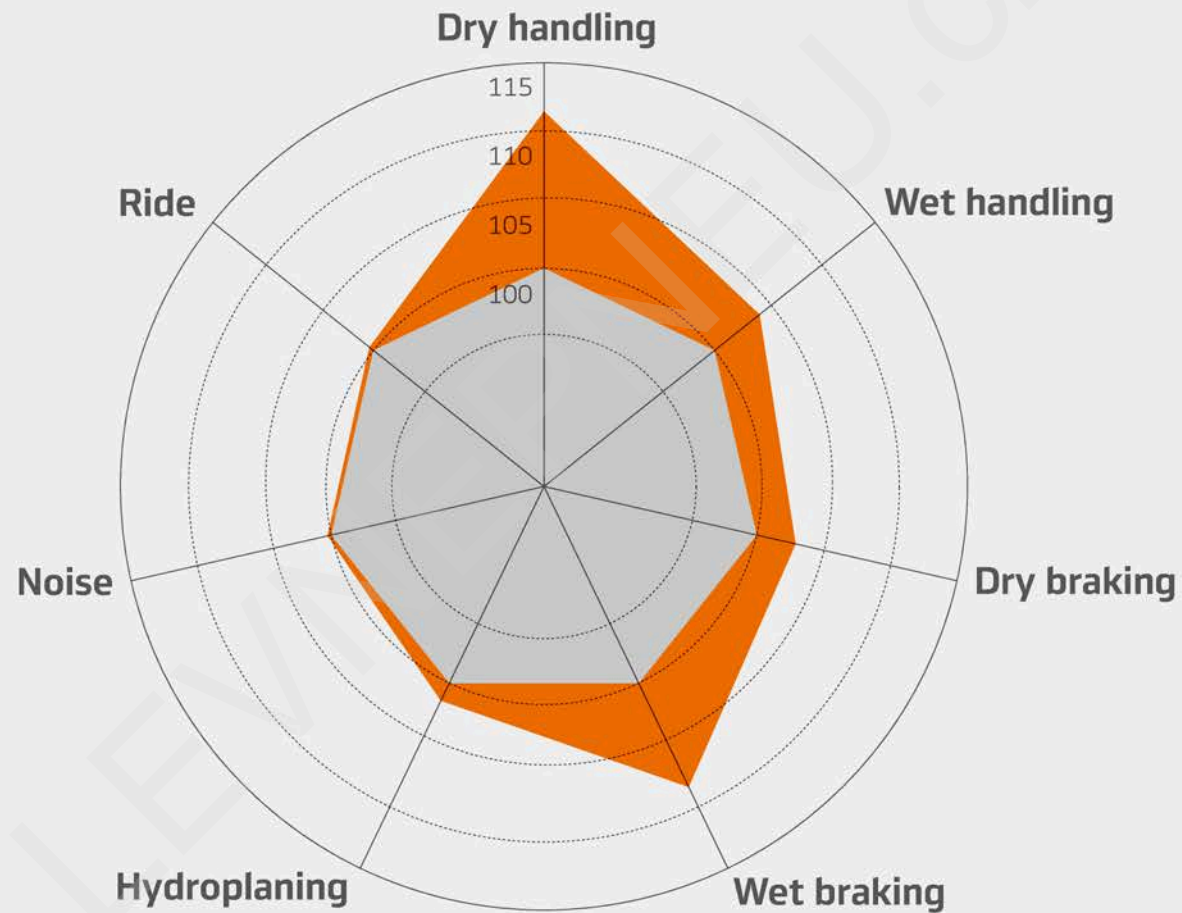
Technical profile

Speed symbol : H, V, W, Y
 Tread width (mm) : 185~245
 Series (aspect ratio) : 40~65
 Rim diameter (inch) : 15~18

Key performance

Improvement in performance compared to predecessor.

■ Conventional
■ **ventus Prime³**



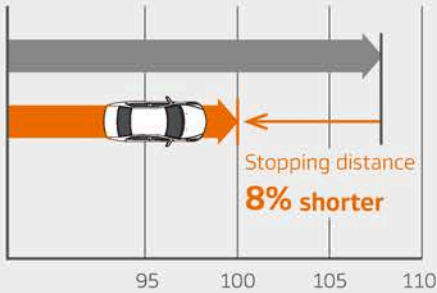
Design features and technology

Wet performance

A Wide 4 channel grooves

Provides superior wet performance through rapid drainage.

Wet braking



■ Conventional ■ VENTUS Prime³

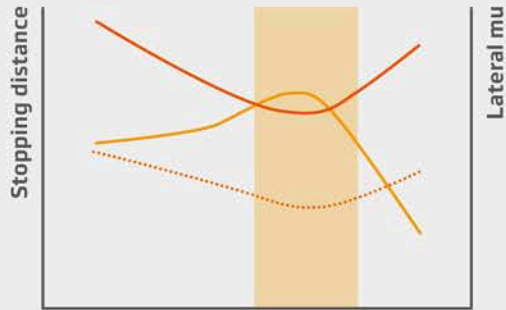
Inside Outside



B Optimised design for specific grooves by position.

All groove depths are designed by their position for optimised stiffness.
→ Minimised trade-off of dry and wet performance to ensure the balance of each.

The actual contact area ratio



Optimised actual contact area ratio adopted.

— Wet handling — Wet braking Dry braking

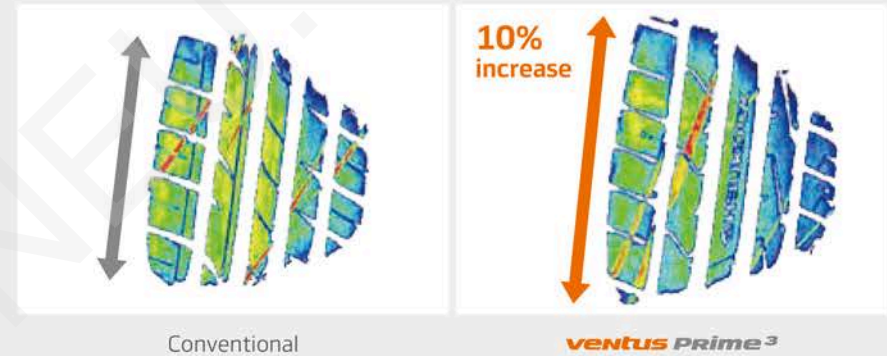
Design features and technology

Dry performance

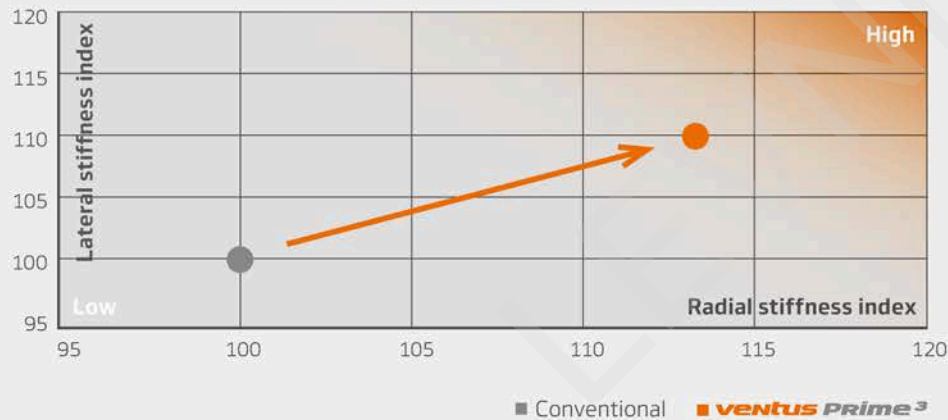
Enhanced tread block stiffness

By applying an optimised design technology the actual contact area ratio is increased and stiffness improved.

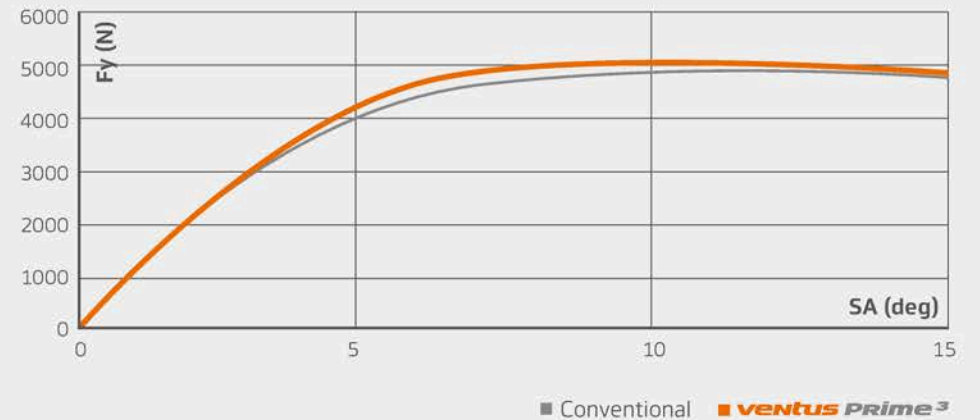
→ Superior handling and braking performance on dry surfaces.



Pattern stiffness



Tyre stiffness



Design features and technology

Dry performance



C Optimised new profile

The optimised profile ensures the best tyre performance in high-speed driving conditions.

D Groove chamfer



The contact area is widened instantaneously when braking by groove chamfer.
→ Improved traction performance.



Design features and technology

Dry performance



E Hybrid hardness design

Optimised handling performance by dual stiffness of ribs.

F Solid outside block



Provides stability and superior handling performance through maximising the outside block rigidity.

G Rib type tread



Enhanced handling and rolling resistance performance.

Design features and technology

Noise

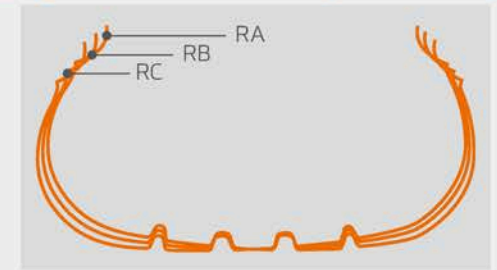
H Noise care pitch



Noise reduction through an optimised pitch design.



I Optimised lateral groove angle



The above simulation was conducted using a variety of contact edge radius.

Design features and technology

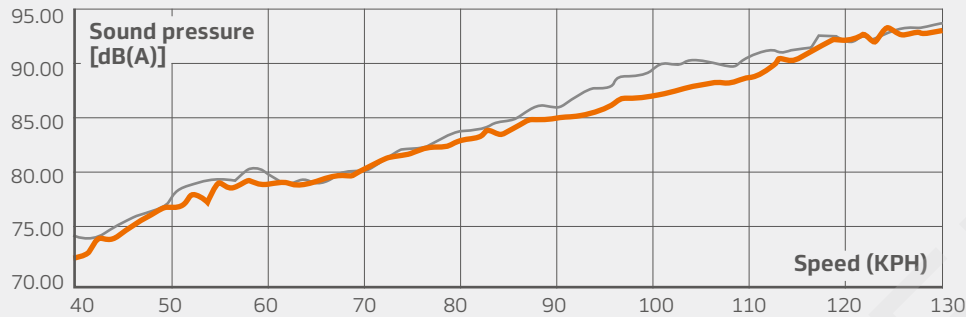
Noise

Even after wear, pattern noise is reduced compared to the existing product through new main groove positioning technology.

Before wear

■ Conventional ■ **ventus Prime³**

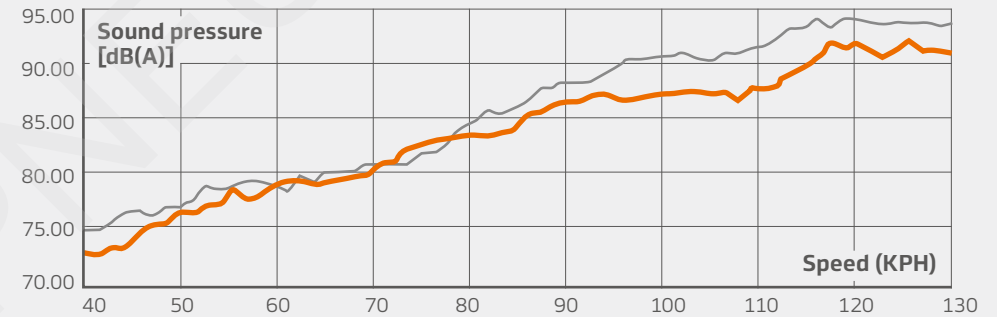
Overall level average



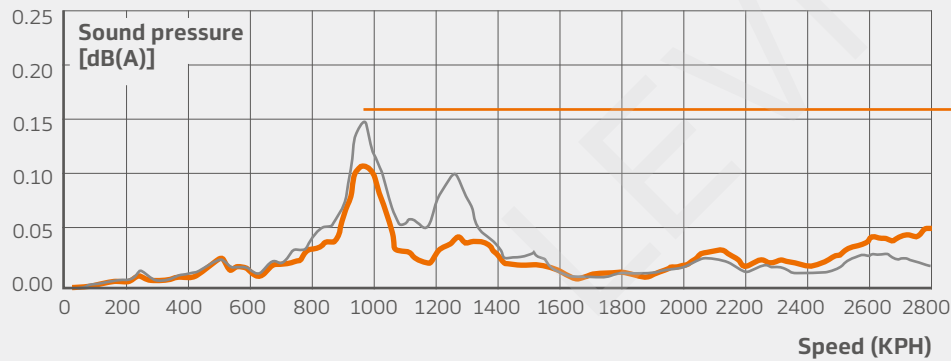
After driving 20,000Km

■ Conventional ■ **ventus Prime³**

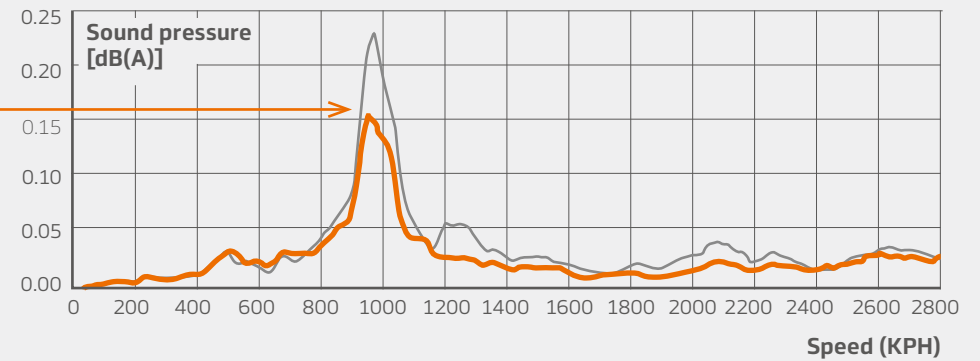
Overall level average



Frequency analysis average



Frequency analysis average



Design features and technology

VAI (Visual alignment indicator) system

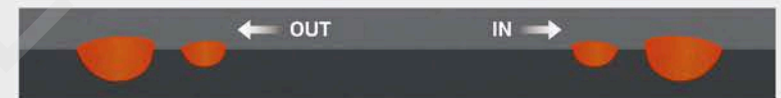
The visual alignment indicator provides an easy to check tyre alignment. Compare the wear on sipes located on both of the tyres shoulders and then realign if necessary.



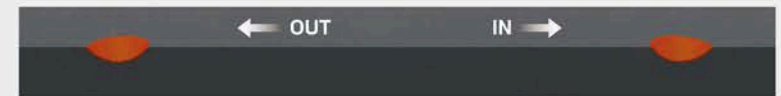
VAI

Indicator marks that have different depths can help easily identify the degree of tyre wear.

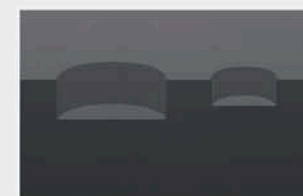
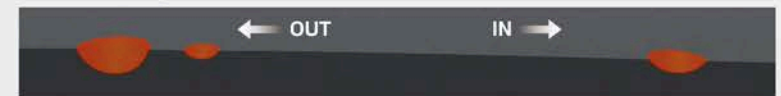
Before use



After use (regular wear)



After use (irregular wear)



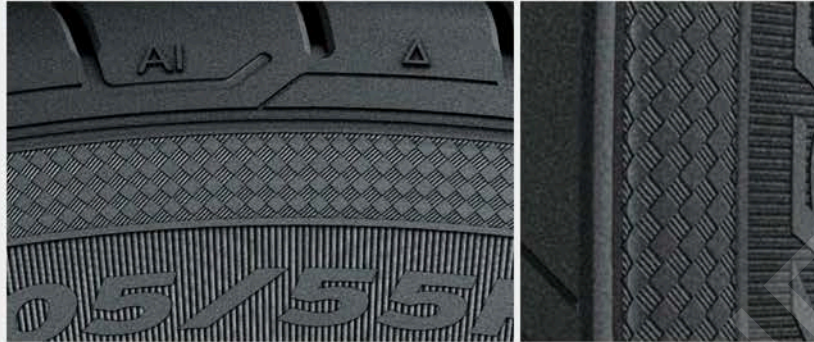
Indicator marks that have different depths can help easily identify the degree of tyre wear.

Design features and technology

Anti-air resistance sidewall

K Anti-air resistance sidewall

Anti-air resistance sidewall design marked with check shaped dimples minimises noise and vibration levels by reducing air turbulence when driving.

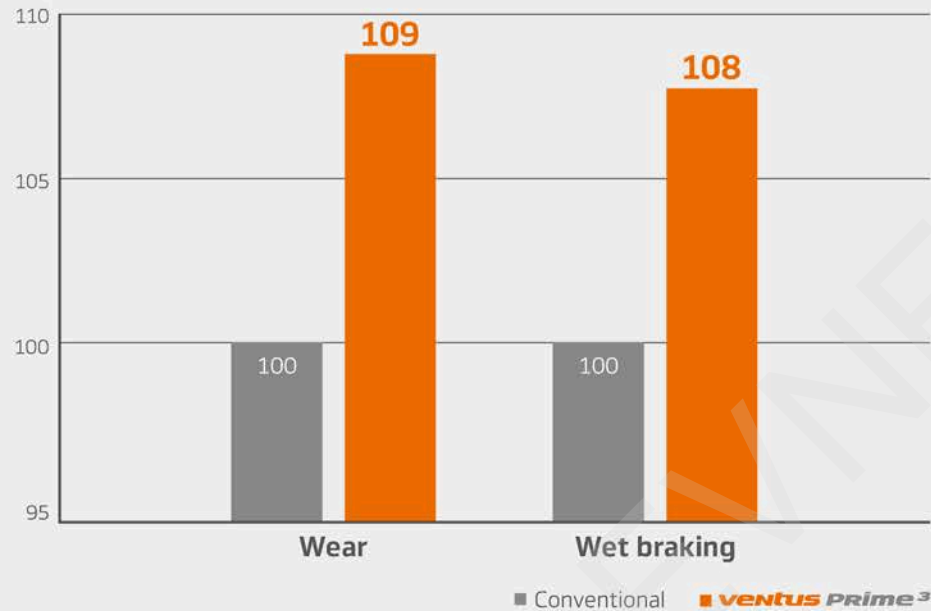


Design features and technology

Compound

New compound

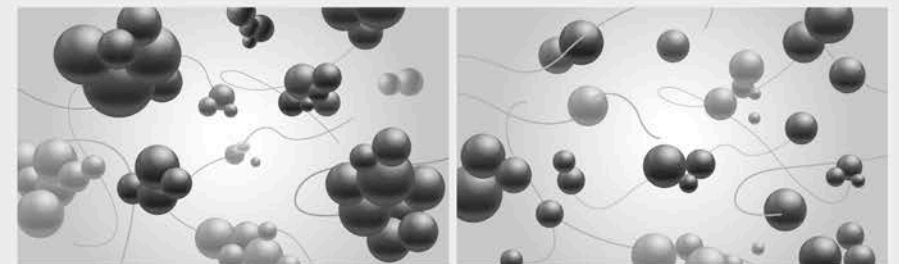
New compound improves wet and wear performance without sacrificing other performance.



Applying a high molecular weight functionalised polymer means wear performance is improved.



Optimised mixing technology for high loading filler and polymer means wet and wear performance is improved.



Better dispersion

Design features and technology

Tyre structure

High grip silica compound

Improved dry / wet traction and lower rolling resistance.

Jointless full cover reinforcement belt

Ideal tread strength.

Wide steel belt layer

Better dry and wet handling.

Equilibrium rayon carcass line

Enhance sidewall stiffness and durability.

High stiffness bead filler

Better handling and steering response.

Strong single strand bead wire

Improved uniformity and tyre fitting.





LEVNERNEU.CZ