



**ION FlexClimate**  
*Evolutionized to perform more in all weather*

CONTENTS

Specifications

p3

iON

The iON Family

p4

EV Size Coverage of iON

p5

iON Innovative Technology

p6

Concept

p7

Features and Benefits

p8

HANKOOK iON



Available Sizes

p12

Specifications

# *ION FlexClimate*

## *ION FlexClimate* **SUV**

### Technical Profile

Tread width

**205-285**

Series

**35-60**

Inch

**17-21**

Speed symbol

**V, W, Y**

### Applied Technology & Tire Performance



Snow handling



EV handling



Low Rolling Resistance



Low noise



i Sound Absorber



# The iON Family

*iON ST AS*  
*iON ST AS SUV*  
ALL-SEASON

*iON evo AS*  
*iON evo AS SUV*  
ALL-SEASON

*iON FlexClimate*  
*iON FlexClimate SUV*  
ALL-WEATHER

*iON evo*  
*iON evo SUV*  
SUMMER

*iON icept*  
*iON icept SUV*  
WINTER STUDLESS



# EV Size Coverage of iON

									
				Compact Car	Sedan	Sport Sedan	Sport & High	Compact SUV	Large & High SUV
Summer	Sport								
	Performance								
All season	Touring								
	Performance								
Winter	Non-Stud	Alpin							

M + S

3PMSF





## Why EV EV Tire Requirments

Why iON  
**iON INNOVATIVE™**  
TECHNOLOGY

### EV Features

**Quiet Operation**

**Low Noise**  
for Comfortable Driving



**i Sound Absorber**

**Heavy Battery**  
(up to 30% weight increase)

**Longer Tread Life**  
for Load Capacity



**i Super Mileage**

**High Instant Torque**

**High Grip**  
for Rapid Acceleration and braking



**i Perfect Grip**

- Long Charging Time (0.5 to 8 hrs)
- Travels <400 to 500km / charge

**Low Rolling Resistance**  
for Reduced Energy Loss



**i Extreme Lightness**



**iON**

# Double the Advantage

The iON Flexclimate (and SUV) pushes the limits of trade-offs to reach optimum performance. The iON Flexclimate (and SUV) is specifically tailored for electric vehicles, but also equipped with the best of both worlds.

## UNCOMPROMISED PERFORMANCE



Wet / Dry Performance



Snow Performance



Low Rolling Resistance



Low Noise



# Technology for Allseason Conditions

## SUMMER

### Perfect Grip

#### Improved Wet Grip

##### Grip Claw

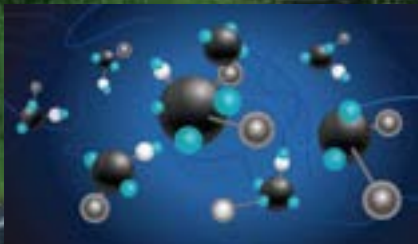
The 3D Grip claw sipes are placed on the main treads to keep the tire in an optimize shape. This helps to provide outstanding grip performance on dry, wet roads and light snow.



**Dry & Wet Grip up**

##### ProGrip Compound

Achieve high grip on wet surfaces through the combination of high-density silica and eco-friendly new materials.



**Wet Grip max 5% up**

## WINTER

#### Outstanding Snow Performance

##### Two in One Sipe

Increased sipe density through 2-in-1 Sipe in the block to improve overall Snow performance.



##### Semi-Bent Groove

Improved traction on winter condition by eliminating circumferential void that does not function in snow traction.



# Be in Complete Control

## Advanced Handling



### Perfect Grip

#### Enhanced Cornering Stability & Steering



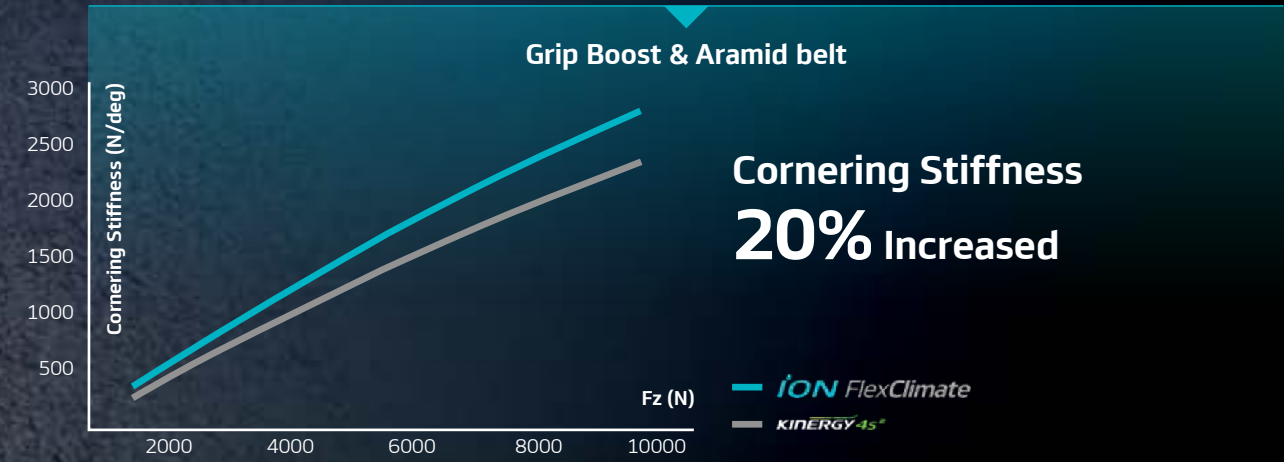
#### Grip Boost

Tire stiffness is essential to be improved to bear the weight of electric vehicles. Grip Boost Technology increases cornering stiffness to advance electric vehicle handling performance.



#### Aramid Hybrid Reinforcement Material

A reinforcement belt mixed with the most advanced fiber, Aramid, is applied on the iON Flexclimate (and SUV) to improve steering performance and maintain an optimized shape during high-speed driving.

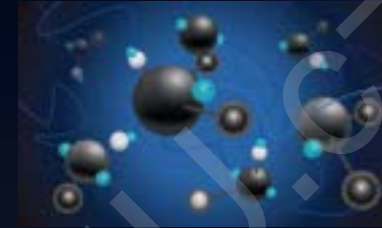


# Go Further for More Experience

## Extended Range and Even Tread Wear



### i Extreme Lightness



#### ProCoupling Compound

Improved electric efficiency (Max. 8%) through the Coupling Agent and Functionalized Polymer optimal compound combination by increasing silica dispersion.

### Further Reduced Rolling Resistance

#### Opti Cure

The iON Flexclimate (and SUV) achieved the highest grade of LRR performance by applying an advanced compound and Hankook tire's Opti Cure technology which improves all parts of the tire equally.



### i Super Mileage



### Extended Tread life

#### Round Even

Tires equipped on electric vehicles wear out approximately 20% faster with uneven wear than on ICE vehicles. Designed to spread the ground pressure evenly, the iON Flexclimate (and SUV) provides longer usage and less replacement.

# Drive in Peace

## Noise Proof Technology

Electric motors are almost soundless which eventually causes the driver to hear more noise from tires. With the Hankook Sound Absorber™, the iON Flexclimate (and SUV) offers a quiet and pleasant ride in all speed ranges.

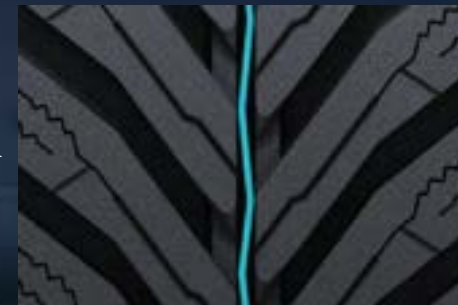


### Sound Absorber

#### Minimized Cavity Noise

##### Quiet Flex

By applying a noise absorbing material inside, cavity noise is decreased up to 6dBA.



#### Minimized Tread Pattern Noise

##### Zig-Zag Pattern Shape

Reduced PBN (max. 1dBA) without dry/wet performance trade-off by complementing stiffness through center groove design and zigzag tie-bar application.

**Speaker icon with downward arrow - 1 dBA**

## Available Sizes

**ION FlexClimate**

Inch	Series	Size	Rolling Resistance	Wet Grip	Noise Class	PBN	Available vehicle
20	45	215/45R20V XL	B	B	B	70	ID.3, Born
	35	235/35ZR20Y XL	B	B	B	70	Model 3
	45	245/45ZR20Y XL	C	B	B	70	BMW iX3, Taycan, e-tron GT
	35	285/35ZR20Y XL	C	B	B	73	EQE, Model S
19	50	215/50R19V XL	C	B	B	70	ID.3, Born
	40	235/40ZR19W XL	C	B	B	70	Model 3
	50	235/50R19V XL	B	B	B	70	EQA, EQB
	40	245/40ZR19Y XL	C	B	B	70	BMW i4
	45	245/45ZR19Y XL	B	B	B	70	BMW iX1, Model S
	40	255/40ZR19Y XL	C	B	B	71	BMW i4
18	40	205/40R18W XL	C	B	B	70	Mini Electric-e
	55	215/55R18V XL	C	B	B	70	ID.3, e2008, Copra Born
	55	225/55R18W XL	C	B	B	70	BMW iX1, IONIQ6
	45	235/45ZR18W XL	C	B	B	70	Model 3

**ION FlexClimate SUV**

Inch	Series	Size	Rolling Resistance	Wet Grip	Noise Class	PBN	Available vehicle
21	50	255/50ZR21W XL	B	B	B	71	BMW iX
	45	235/45R20V XL	C	B	B	70	EQA, EQB
	50	235/50ZR20W XL	C	B	B	70	Q4 e-tron, ID.4, EQC
20	40	255/40ZR20Y XL	C	B	B	71	EQE, Model Y, Model S
	45	255/45ZR20W XL	B	B	B	71	Q4 e-tron, ID.4, IONIQ 5, EV6, EQC, BMW i7
	45	265/45ZR20W XL	B	B	B	71	Model X, i.D Buzz, Q5 e-tron
	40	275/40ZR20Y XL	B	B	B	71	BMW iX3
	55	235/55ZR19W XL	B	B	B	70	e-tron, ID.4, IONIQ 5, EV6, GV60, EQC
19	45	255/45ZR19Y XL	B	B	B	71	EQE, Model Y, Model S
	50	255/50ZR19W XL	B	B	B	71	Q4 e-tron, EQC, ID.4
	50	215/50R18V XL	C	B	B	70	e-Kona, e-Niro
18	55	235/55R18V XL	C	B	B	70	EQA, EQB
	60	235/60R18V XL	B	B	B	70	Enyaq IV, ID.4, ID.Buzz
17	55	215/55R17V XL	C	B	B	70	e-Kona, e-Niro



LEMVEMEJ.CZ