

# Grip the Road, Conquer the Curves

Superior performance summer tyre for heightened driving pleasure and response

**ECSTA**  
SPORT S



**ECSTA**  
SPORT

SUPER  
SPORT

EV COMPATIBLE

SPORT

## Excellent Wet & Dry Braking



### Designed for Performance

All aspects of Ecsta Sport and Ecsta Sport S are designed for driving performance and driver confidence. From the robust centre block which provides superior traction and braking to the reinforced inner grooves which provide water evacuation and control in wet conditions

### Max Grip Resin

The advanced materials improve braking performance by 9% in dry and 10% in wet. Ecsta Sport and Sport S are the right tyre for drivers demanding safe and sure-footed driving

\*ECSTA SPORT



## Designed for Precise Handling and Safe Stable Driving



### Handling & Stability Specialized Design

Strong center & outer blocks and high stiffness rubber ensure optimum cornering ability, precise handling and high speed stability

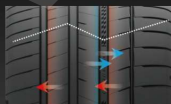
### Structure Optimised for Cornering

The improved structure increases cornering ability and improves handling response



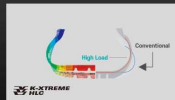
## EV Compatible

Designed for Electric and ICE Vehicles



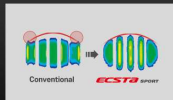
### Special Tread Design

The distinctive zig-zag tread design is well suited to the high traction and high torque of modern EVs as well as all internal combustion engine vehicles



### High Load Capacity

A strong tyre well suited to heavy EVs



### Stable Contact Area

Promotes even wear characteristics and high levels of safety



### K-Silent Technology

A sound absorbing technology for a quieter and more peaceful cabin

## TEST RESULT



**TÜV SÜD  
PRODUCT SERVICE  
GMBH**

TIRE TEST 2024 (BENCHMARK TEST)

Tested by TÜV SÜD Product Service GmbH in 24/03  
Size: 255/35 R19, XL 96(Y)  
Compared to 5 competitors

