

4-SEASONS



Landsail 4-seasons

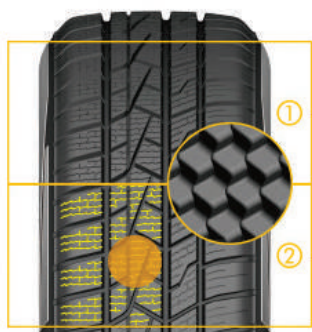
The Land Sail 4-seasons is a technically advanced product. The unique tread design lets the tyre excel in all seasons.

The unique dual tread compound gives good grip in all conditions.

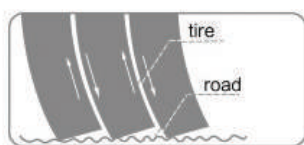
The tyre has the three peak mountain snowflake symbol, which qualifies it as an official winter tyre.

| Size | XL | Load | Speed | | | | |
|------------------|----|------|-------|---|---|---|----|
| 70 Series | | | | | | | |
| 165 / 70 R13 | | 79 | T | E | C | 2 | 71 |
| 175 / 70 R13 | | 82 | T | E | C | 2 | 71 |
| 165 / 70 R14 | | 81 | T | E | C | 2 | 71 |
| 175 / 70 R14 | | 88 | T | C | C | 2 | 71 |
| 65 Series | | | | | | | |
| 155 / 65 R14 | | 75 | T | E | C | 2 | 71 |
| 165 / 65 R14 | | 79 | T | E | C | 2 | 71 |
| 175 / 65 R14 | | 82 | T | E | C | 2 | 71 |
| 185 / 65 R15 | | 88 | H | C | C | 2 | 72 |
| 195 / 65 R15 | | 91 | H | C | C | 2 | 72 |
| 60 Series | | | | | | | |
| 185 / 60 R14 | | 82 | H | E | C | 2 | 71 |
| 185 / 60 R15 | | 88 | H | C | C | 2 | 71 |
| 195 / 60 R15 | | 88 | H | C | C | 2 | 72 |
| 205 / 60 R16 | | 96 | H | C | C | 2 | 72 |
| 55 Series | | | | | | | |
| 185 / 55 R15 | | 82 | H | E | C | 2 | 71 |
| 195 / 55 R15 | | 85 | H | E | C | 2 | 72 |
| 195 / 55 R16 | | 87 | H | E | C | 2 | 72 |
| 205 / 55 R16 | | 91 | V | C | C | 2 | 72 |
| 215 / 55 R16 | | 97 | V | C | C | 2 | 72 |
| 45 Series | | | | | | | |
| 225 / 45 R17 | | 94 | V | C | C | 2 | 72 |

| | |
|-------------------------|--------------------|
| Series | 70, 65, 60, 55, 45 |
| Rim inches | 13, 14, 15, 16, 17 |
| Speed rate | T, H, V |
| Typical vehicle matches | |



- 1 Exclusive tread design**
Provides grip in all 4 seasons
- 2 Wave sipes**
Provides superior traction without sacrificing stability



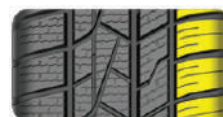
Comfortable profile design

Optimal placement of the tread blocks in the tread reduce resonance in the tread, resulting in a high comfort and low rolling noise



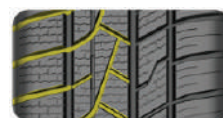
Three wide lateral grooves

Three wide lateral grooves for efficient water drainage, ensuring more control in rain and snow conditions



Shoulder Profile

The shoulder section is specially designed to ensure excellent steering precision



Crossdesign

The interior of the profile creates the unique "cross section" for excellent grip in snow and ice conditions