

# LSV 88



## Landsail LSV88



The Landsail LSV88 is a sturdy van tyre that can stand hard wear.

The special rubber compound, the strong carcass and the balanced tread guarantee optimal performance when carrying maximum load.

Moisture and dirt are dispersed effectively and maximum grip is retained as a result. The extra reinforced tyre shoulders also ensure stable handling in the bends.

A repetitive S-tread on the edges of the shoulders helps to evacuate the heat of the tyre created by the contact of the tyre with the surface. The Landsail LSV88 is a reliable delivery van tyre.

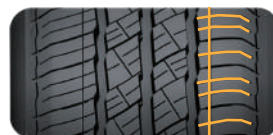
|                         |   |
|-------------------------|---|
| Series                  | 65, 70, 75  |
| Rim inches              | 15, 16,   |
| Speed rate              | S, T  |
| Typical vehicle matches | Lexus LX470<br>Land Rover<br>Ford Expedition<br>Mercedes-Benz, ML320, ML430<br>BMW X5<br>Nissan Pathfinder<br>Hummer, H2, H3<br>Jeep Grand Cherokee |

| Size             | XL | Load    | Speed |  |  |  |  |
|------------------|----|---------|-------|---|---|---|---|
| <b>75 Series</b> |    |         |       |   |   |   |   |
| 185 / 75 R16     |    | 104/102 | S     | E   | C   | 3   | 73  |
| 215 / 75 R16     |    | 113/111 | S     | E   | C   | 3   | 73  |
| <b>70 Series</b> |    |         |       |   |   |   |   |
| 195 / 70 R15     |    | 104/102 | S     | E   | C   | 3   | 73  |
| 205 / 70 R15     |    | 106/104 | S     | E   | C   | 3   | 73  |
| 215 / 70 R15     |    | 109/107 | S     | E   | C   | 3   | 73  |
| 225 / 70 R15     |    | 112/110 | S     | E   | C   | 3   | 73  |
| <b>65 Series</b> |    |         |       |   |   |   |   |
| 205 / 65 R15     |    | 102/100 | T     | E   | C   | 3   | 73  |
| 195 / 65 R16     |    | 104/102 | T     | E   | C   | 3   | 73  |
| 205 / 65 R16     |    | 107/105 | T     | E   | C   | 3   | 73  |
| 215 / 65 R16     |    | 109/107 | T     | E   | C   | 3   | 73  |
| 225 / 65 R16     |    | 112/110 | T     | E   | C   | 3   | 73  |
| 235 / 65 R16     |    | 115/113 | T     | E   | C   | 3   | 73  |



### Tractive longitudinal grooves

Improving hydroplaning resistance while enhancing the tire traction.



### Compact shoulder

Enhance the shoulder stability, optimize high-speed cornering performance.



### Heat-releasing shoulder

Continuous "S" groove to improve heat-releasing ability.



### Staggered siping

Improve braking ability.

