

Landsail Snowstar

The Landsail Snowstar is a winter tyre.

The central longitudinal groove and the 2 zigzag longitudinal grooves ensure rapid dispersion of water and snow, allowing grip, steering and braking to be maintained.

The coarse rubber surface (3D technology) creates extra grip. This helps create better traction on snow and the car remains steerable.

The Landsail Winterlander makes driving in the winter much safer.

Series	70, 65
Rim inches	15, 16
Speed rate	S, T
Typical vehicle matches	VW transporter, Toyota Hi ace, Mercedes-Benz Sprinter, Vito Citroen Jumper, Renault Master, Fiat Ducato, Ford Transit, Opel Movano

Size	XL	Load	Speed				
70 Series							
195 / 70 R15		104	S	E	C	2	73
205 / 70 R15		106	S	E	C	2	73
225 / 70 R15		112	S	E	C	2	73
65 Series							
195 / 65 R16		104	T	E	C	2	73
205 / 65 R16		107	T	E	C	2	73
215 / 65 R16		109	T	E	C	2	73
235 / 65 R16		115	S	E	C	2	73



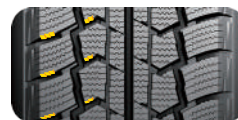
THE BEAUTIFUL SHOULDER PATTERN

The beautiful shoulder pattern can not only reduce wind resistance, but also dissipate heat.



THREE WIDE LONGITUDINAL GROOVES

Three wide longitudinal grooves can highly evacuate water to enhance steering, braking and hydroplaning resistance.



SAWTOOTH LATERAL GROOVES

Sawtooth lateral grooves help deliver high grip force to maintain steering stability.

