

MICHELIN / ALPIN⁶



PASSENGER CAR
Premium sedan

SAFETY IN SEVERE WINTER
SAFETY MADE TO LAST IN SEVERE WINTER CONDITIONS



Excellent safety & traction in severe winter conditions^{1,2}



Excellent grip in low temperatures, outperforming the previous generation tire by +6% on wet surfaces and +8% in snow²

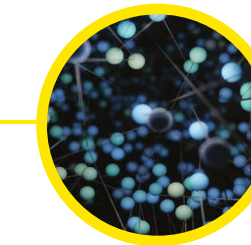
Engineered for braking and traction on snow, made to last²



Best longevity³

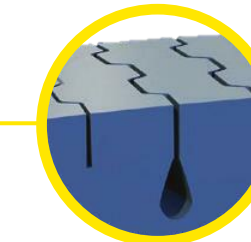


Innovative treadwear indicator



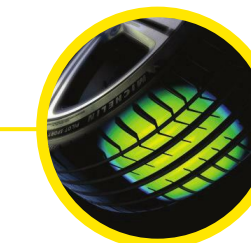
Latest generation compound

Designed to deliver excellent grip in low temperatures.



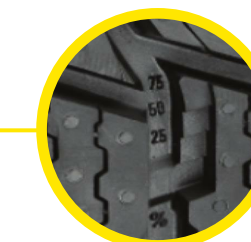
MICHELIN EverWinterGrip technologies

Multi-layer tread compound and evolute tread pattern with grooves that emerge and widen as the tire wears, ensuring continued braking and traction on snow.



MaxTouch Construction

Maximizes the tire's contact with the road and evenly distributes the forces of acceleration, braking and cornering - delivering longer tread life without sacrificing performance.



Innovative treadwear indicator

Takes the guesswork out of tire changes.

For more information on no. 1-3

Click



SUMMER



ALL SEASON



WINTER



PREVIOUS



NEXT