

OPTIMUM BALANCE BETWEEN PERFORMANCE AND COMFORT

**P ZERO
ROSSO™**

HOMOLOGATIONS

AUDI	MASERATI
BENTLEY	MERCEDES
BMW	PORSCHE
FERRARI	SALEEN
LAMBORGHINI	

The **Pirelli P ZERO ROSSO™** is designed to offer sports performance, providing outstanding steering response on dry and wet roads. It was developed for sports cars with electronic drive and stability control systems. The product features two different tread patterns, designed to provide the best sports performance:

- A directional tread pattern, for the front axle
- An asymmetric tread pattern for the rear axle



CAR / SUV



SUMMER



PERFORMANCE



1 WET HANDLING

The directional tread pattern on the front axle is designed to provide excellent grip on both wet and dry roads, thanks to its "arrow" grooves and longitudinal channels.

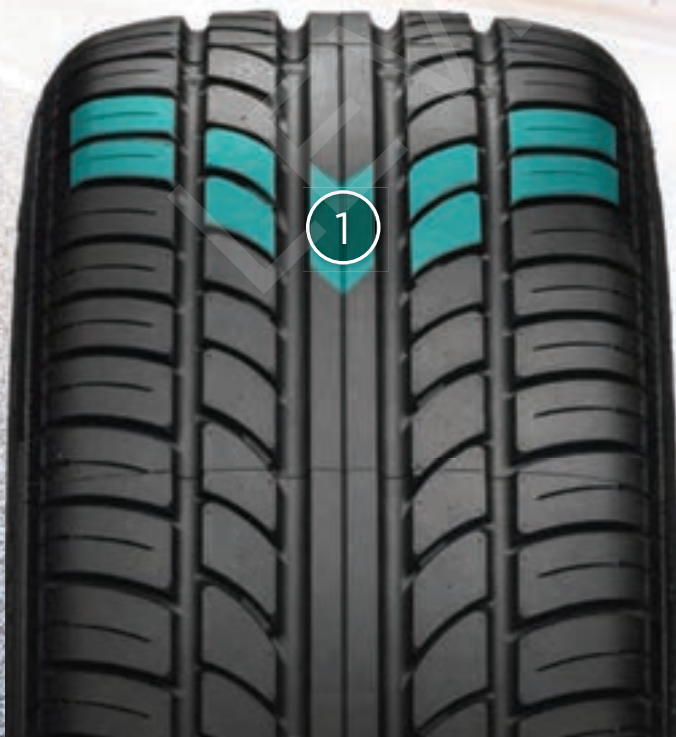
2 ENHANCED CONTROL

The four longitudinal grooves are designed to improve control in potential hydroplaning situations.

3 HIGH HANDLING

The asymmetric pattern design for the rear axle promotes high levels of handling. Its semi-slick center rib enhances driving precision in accelerating and braking, while the robust outer shoulder and intermediate tread blocks are connected by circumferential rings, enhancing dry grip.

DIRECTIONAL



ASYMMETRIC

